

Year: 2014
Make: Toyota
Model: Corolla S PREMIUM
VIN: 5YFBURHE8EP171934

Engine: 4 Cylinder
Transmission: CVT-E
Exterior: Slate Metallic (1F9)
Interior: Black For Limited/Trail B

Exterior

- Rear Deck Spoiler
- Color-Keyed Heated Power Outside Mirrors
- Integrated Fog Lights
- LED Daytime Running Lights
- LED Low Beam, Halogen Highbeam Headlamps

Interior

- Eco Indicator
- Remote Keyless Entry w/Lock,Unlock,Panic
- Power Door Locks and Windows
- Steering Wheel Mounted Paddle Shifters
- Leather-wrapped Steering Wheel w/ Audio & Hands-free Phone Voice Command Cntrls
- Cruise Control
- 60/40 Split Fold-Down Rear Seat
- SofTex-Trimmed Heated Front Seats; 8-way Pwr Adj Dr Seat, 4-way Adj Pass Seat
- Integrated Backup Camera

- Entune Audio (w/o Entune App Suite/Data) 6.1" Touch Screen/Bluetooth/USB/AUX/CD
- Auto Climate Control w/ Pollen Filter

Mechanical And Performance

- 17-in Alloy Wheels with P215/45R17 Tires
- Front and Rear Disc Brakes
- Electric Power Steering (EPS)
- Indep MacPherson Strut Front Suspension and Torsion Beam Rear Suspension
- Sport Drive Mode
- Continuously Variable Transmission
- 1.8L 4-cyl DOHC 16-Valve Dual VVT-i

Safety And Convenience

- LATCH (Lwr Anchors&Tethers for Children) for Outboard Rear Seating Positions Only
- 3-Point Seatbelts in All Seat Positions & Front Seatbelt Pretensioners
- Whiplash-Injury Lessening Front Seats
- 8 Airbags: Dr & Fr Pass Adv Airbag Sys, Dr & Fr Pass Seat-Mounted Side Airbags, Dr Knee Airbag, Pass Seat Cushion Airbag Front & Rear Side Curtain Airbags
- Star Safety System Includes: VSC, TRAC, Anti-lock Brake System, EBD, Brake Assist & Smart Stop Technology (SST)

CITY MPG
29



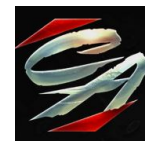
HIGHWAY MPG
37

Actual mileage will vary with options, driving conditions, driving habits and vehicle's condition

INSTALLED OPTIONS

[SO] S Premium Package	\$0
· Sport Plus Package option 1	
[EX] Driver Convenience Package	\$1,510
[MR] Power Tilt/Slide Moonroof	\$850
· sliding sunshade	
[Z5] Protection Package	\$353
· Rear Bumper Protector	
· Carpeted Floor Mats & Trunk Mat	
· Cargo Net	
[G0] Door Sill Enhancements	\$199
[D5] Door Edge Guard	\$125
[DK] Preferred Owner's Portfolio	\$0
[FE] 50 State Emissions	\$0
Original Shipping Charge	\$825

Get more information on your smartphone:



www.shopcentralauto.com
916-333-4773