

Year: 2016
Make: Nissan
Model: Altima S
VIN: 1N4AL3APXGN325878

Engine: 4 Cylinder Engine
Transmission: continuously-variable automatic and floor shifter
Exterior: Brilliant Silver (K23)
Interior: Charcoal

SAFETY

- Outboard Front Lap And Shoulder Safety Belts -inc: Rear Center 3 Point, Height Adjusters and Pretensioners
- Rear Child Safety Locks
- Airbag Occupancy Sensor
- Curtain 1st And 2nd Row Airbags
- Dual Stage Driver And Passenger Front Airbags
- Dual Stage Driver And Passenger Seat-Mounted Side Airbags
- Side Impact Beams

INTERIOR

- 2 12V DC Power Outlets
- Immobilizer
- Perimeter Alarm
- Front Center Armrest w/Storage and Rear Center Armrest
- Analog Appearance
- Outside Temp Gauge
- Driver Information Center
- Delayed Accessory Power
- Driver / Passenger And Rear Door Bins and Audio Media Storage
- Cargo Space Lights
- Cargo Area Concealed Storage
- Full Carpet Floor Covering
- Fade-To-Off Interior Lighting
- Front And Rear Map Lights
- Full Floor Console w/Covered Storage, Mini Overhead Console w/Storage and 2 12V DC Power Outlets
- Leatherette Door Trim Insert
- Full Cloth Headliner
- Driver Foot Rest
- Illuminated Locking Glove Box
- Remote Releases -Inc: Power Cargo Access and Mechanical Fuel
- Valet Function

- Rear Cupholder
- Front Cupholder
- Power Rear Windows
- Manual Tilt/Telescoping Steering Column
- 60-40 Folding Bench Front Facing Fold Forward Seatback Rear Seat

EXTERIOR

- Trunk Rear Cargo Access
- Black Grille w/Chrome Accents
- Galvanized Steel/Aluminum Panels
- Front Windshield -inc: Sun Visor Strip
- Speed Sensitive Variable Intermittent Wipers
- Light Tinted Glass
- Fixed Rear Window w/Defroster
- Chrome Door Handles
- Chrome Side Windows Trim and Black Front Windshield Trim
- Body-Colored Rear Bumper
- Body-Colored Front Bumper
- Clearcoat Paint
- Compact Spare Tire Mounted Inside Under Cargo

MECHANICAL

- 4-Wheel Disc Brakes w/4-Wheel ABS, Front Vented Discs, Brake Assist and Hill Hold Control
- Multi-Link Rear Suspension w/Coil Springs
- Strut Front Suspension w/Coil Springs
- Quasi-Dual Stainless Steel Exhaust w/Chrome Tailpipe Finisher
- 18 Gal. Fuel Tank
- Electro-Hydraulic Power Assist
- Speed-Sensing Steering
- Gas-Pressurized Shock Absorbers
- 110 Amp Alternator
- 550CCA Maintenance-Free Battery w/Run Down Protection
- 4.83 Axle Ratio
- Front-Wheel Drive

CITY MPG

27



HIGHWAY MPG

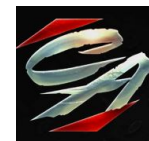
39

Actual mileage will vary with options, driving conditions, driving habits and vehicle's condition

INSTALLED OPTIONS

| | |
|--|-------|
| [X01] Power Driver Seat Package | \$340 |
| • 6-Way Power Driver's Seat | |
| [C01] California Emissions | \$0 |
| [L92] Floor Mats Plus Trunk Mat (5 Piece Carpeted) | \$210 |
| Original Shipping Charge | \$865 |

Get more information on your smartphone:



www.shopcentralauto.com
916-333-4773