

Year: 2014  
Make: Mercedes-Benz  
Model: Sprinter Passenger Vans -  
VIN: WDZPE8DC9E5895324

Engine: 2.1L BlueTEC® in-line 4 DOHC  
Transmission: automatic with manual mode and dash-mounted shifter  
Exterior: Jet Black (040)  
Interior: Black leatherette

## SAFETY

- Outboard Front Lap And Shoulder Safety Belts -inc: Rear Center 3 Point, Height Adjusters and Pretensioners
- Dual Stage Driver And Passenger Front Airbags
- Side Impact Beams

## INTERIOR

- Air Filtration
- 3 12V DC Power Outlets
- Immobilizer
- 2 Seatback Storage Pockets
- Driver And Front Passenger Armrests
- Manual w/Tilt Front Head Restraints and Manual Adjustable Rear Head Restraints
- Seats w/Vinyl Back Material
- Analog Appearance
- Outside Temp Gauge
- Power 1st Row Windows w/Driver And Passenger 1-Touch Down
- Instrument Panel Bin, Dashboard Storage, Interior Concealed Storage, Driver And Passenger Door Bins
- FOB Controls -inc: Cargo Access
- Cargo Space Lights
- Cargo Net
- Vinyl/Rubber Floor Trim
- Fade-To-Off Interior Lighting
- Full Overhead Console w/Storage and 3 12V DC Power Outlets
- Day-Night Rearview Mirror
- Urethane Gear Shifter Material
- Full Cloth Headliner
- Driver Foot Rest
- Glove Box
- HVAC -inc: Underseat Ducts, Residual Heat Recirculation and Supplemental Heater
- Ashtray
- Front Cigar Lighter
- Front Cupholder
- Removable Bench Front Facing 4th Row Seat Number, Control and Type Head Restraint
- Removable Bench Cloth 3rd Row Seat Front, 3 Manual and Adjustable Head Restraints
- Fixed Rear Windows and Fixed 3rd Row Windows
- Gauges -inc: Speedometer, Odometer, Tachometer and Trip Odometer
- Manual Tilt/Telescoping Steering Column
- Removable Bench Front Facing Cloth Rear Seat
- Adjustable Front Passenger Seat
- Passenger Seat
- 4-Way Driver Seat -inc: Manual Recline and Fore/Aft Movement
- Bucket Seats

## ENTERTAINMENT

- Bluetooth Wireless Phone Connectivity
- 5 Front & 8 Rear Radio Speakers

- Integrated Roof Antenna
- Streaming Audio
- Audio Theft Deterrent
- Radio w/Seek-Scan and Clock

## EXTERIOR

- LED Brakelights
- Aero-Composite Halogen Daytime Running Headlamps
- Split Swing-Out Rear Cargo Access
- Sliding Rear Passenger Side Door
- Front License Plate Bracket
- Black Grille
- Splash Guards
- Fully Galvanized Steel Panels
- Deep Tinted Glass
- Fixed Rear Window w/Defroster
- Black Manual Side Mirrors w/Convex Spotter and Manual Folding
- Black Door Handles
- Black Side Windows Trim and Black Front Windshield Trim
- Argent Bodyside Moldings
- Argent Rear Bumper w/1 Tow Hook
- Argent Front Bumper
- Clearcoat Paint
- Steel Spare Wheel
- Tires: LT245/75R16

## MECHANICAL

- 4-Wheel Disc Brakes w/4-Wheel ABS, Front Vented Discs, Brake Assist and Hill Hold Control
- Solid Axle Rear Suspension w/Leaf Springs
- Strut Front Suspension w/Transverse Leaf Springs
- Electric Fuel Pump
- Single Stainless Steel Exhaust
- 26.4 Gal. Fuel Tank
- Hydraulic Power-Assist Steering
- Front And Rear HD Anti-Roll Bars
- 2422# Maximum Payload
- Refrigerant compressor
- Alternator For Fuel Economy
- AGM Battery 12V 95 Ah -inc: Not available in body color, Recommended for Ambulances
- Battery Management
- ECO Power Steering Pump
- 200 Amp Alternator
- Rear-Wheel Drive
- Emissions EPA14/CARB
- GVWR: 8,550 lbs
- 3.92 Axle Ratio

## CITY MPG

22



## HIGHWAY MPG

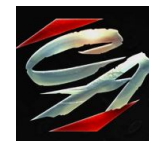
32

Actual mileage will vary with options, driving conditions, driving habits and vehicle's condition

## INSTALLED OPTIONS

[4CE] 4 Cylinder Engine/7 Speed Transmission	\$0
[X11] High Performance Air Conditioning Package	\$3,350
• Rear Air Conditioning	
[X22] Trailer Hitch Package	\$350
• Trailer Hitch Prep Package	
• wire harness w/7 pin connector	
• 5	
• 000 lbs Capacity Trailer Cross Member	
[M60] 14 V/250 A Generator	\$0
[F68] Heated & Electrically Adjustable Exterior Mirrors	\$250
[MS1] Cruise Control	\$355
[H13] Auxiliary Rear Heater	\$680
[HZ9] Heater Booster 5 KW	\$585
[LD4] Convenience Lighting In Load/Pass. Compartments	\$180
[SH9] Driver/Passenger Window Airbag	\$610
Original Shipping Charge	\$995

Get more information on your smartphone:



www.shopcentralauto.com  
916-333-4773