

Year: 2014  
Make: Nissan  
Model: Maxima S  
VIN: 1N4AA5AP2EC466230

Engine: V6 Cylinder Engine  
Transmission: continuously trans with manual mode and floor shifter  
Exterior: Pearl White (QAB)  
Interior:

## SAFETY

- Outboard Front Lap And Shoulder Safety Belts -inc: Rear Center 3 Point, Height Adjusters and Pretensioners
- Rear Child Safety Locks
- Airbag Occupancy Sensor
- Curtain 1st And 2nd Row Airbags
- Dual Stage Driver And Passenger Front Airbags
- Tire Specific Low Tire Pressure Warning
- Dual Stage Driver And Passenger Seat-Mounted Side Airbags
- Side Impact Beams

## INTERIOR

- Air Filtration
- 2 12V DC Power Outlets
- Immobilizer
- Perimeter Alarm
- 2 Seatback Storage Pockets
- Manual Anti-Whiplash Adjustable Front Head Restraints and Manual Adjustable Rear Head Restraints
- Analog Appearance
- Outside Temp Gauge
- Delayed Accessory Power
- Driver And Passenger Door Bins
- Cargo Space Lights
- Carpet Floor Trim and Carpet Trunk Lid/Rear Cargo Door Trim
- Full Carpet Floor Covering
- Fade-To-Off Interior Lighting
- Front And Rear Map Lights
- Driver And Passenger Visor Vanity Mirrors w/Driver And Passenger Illumination, Driver And Passenger Auxiliary Mirror
- Day-Night Auto-Dimming Rearview Mirror
- Vinyl Door Trim Insert
- Full Cloth Headliner
- Driver Foot Rest
- Illuminated Locking Glove Box
- HVAC -inc: Underseat Ducts and Console Ducts
- Dual Zone Front Automatic Air Conditioning
- Cruise Control w/Steering Wheel Controls
- Remote Releases -Inc: Power Cargo Access

- Power Fuel Flap Locking Type
- Valet Function
- Rear Cupholder
- Front Cupholder
- Passenger Seat
- Driver Seat

## EXTERIOR

- LED Brakelights
- Trunk Rear Cargo Access
- Front License Plate Bracket
- Galvanized Steel/Aluminum Panels
- Front Windshield -inc: Sun Visor Strip
- Speed Sensitive Variable Intermittent Wipers
- Light Tinted Glass
- Fixed Rear Window w/Defroster
- Chrome Door Handles
- Chrome Side Windows Trim and Black Front Windshield Trim
- Body-Colored Rear Bumper
- Body-Colored Front Bumper
- Clearcoat Paint
- Compact Spare Tire Mounted Inside Under Cargo
- Steel Spare Wheel

## MECHANICAL

- 4-Wheel Disc Brakes w/4-Wheel ABS, Front Vented Discs and Brake Assist
- Multi-Link Rear Suspension w/Coil Springs
- Strut Front Suspension w/Coil Springs
- Quasi-Dual Stainless Steel Exhaust w/Chrome Tailpipe Finisher
- 20 Gal. Fuel Tank
- Hydraulic Power-Assist Speed-Sensing Steering
- Front And Rear Anti-Roll Bars
- Gas-Pressurized Shock Absorbers
- 130 Amp Alternator
- 55-Amp/Hr 550CCA Maintenance-Free Battery w/Run Down Protection
- 5.17 Axle Ratio
- Front-Wheel Drive

CITY MPG

19



HIGHWAY MPG

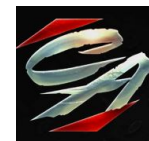
26

Actual mileage will vary with options, driving conditions, driving habits and vehicle's condition

## INSTALLED OPTIONS

[C03] 50 State Emissions	\$0
[L92] Carpeted Floor Mats/Trunk Mat (5 Piece Set)	\$210
Original Shipping Charge	\$825

**Get more information on your smartphone:**



www.shopcentralauto.com  
916-333-4773