

Year: 2019  
Make: Toyota  
Model: Corolla Hatchback SE 5Dr HATCHBACK  
VIN: JTNK4RBE8K3019323

Engine: 2.0-Liter Dynamic Force 4-Cylinder Engine  
Transmission: CVT  
Exterior: Midnight Black Metallic (218)  
Interior: Black Fabric

## Exterior

- LED reflector headlights; LED Daytime Running Lights (DRL) with auto on/off feature
- Chrome rear diffuser
- LED taillights
- 16-in. twin-spoke alloy wheels with P205/55R16 tires
- Color-keyed heated power outside mirrors with turn signal indicators
- Dark gray front grille surround

## Interior

- Two USB 2.0 charging ports
- Vehicle speed-sensing Electric Power Steering (EPS)
- Covered center console, armrest and storage
- Top tether anchor
- Electric Parking Brake (EPB) with Brake Hold
- ISOFIX lower anchor (left and right seats)
- 60/40 split fold-down rear seats with center armrest and cup holders
- One 12V auxiliary power outlet
- 4.2-in. Multi-Information Display with odometer, outside temperature, fuel economy and trip information, current/average fuel economy, distance to empty, average speed, trip distance with timer, TPMS, scheduled maintenance, compass, and warning messages.
- Sport Mode
- Premium leather-trimmed tilt/telescopic steering wheel with audio, Multi-Information Display, paddle shifters, Bluetooth® hands-free phone and voice-command controls
- Fabric sport seats with 6-way adjustable driver's seat with seatback pocket; 4-way adjustable front passenger seat with seatback pocket

## Mechanical And Performance

- Sport Mode
- 2.0-Liter Dynamic Force 4-Cylinder DOHC 16-valve D-4S Dual Injection with Dual Variable Valve Timing with intelligence (VVT-i); 168 hp @ 6600 rpm; 155 lb.-ft. @ 4800 rpm
- Electric Parking Brake (EPB)
- 225/40R18 Aluminum, bright machine-finished with dark gray metallic paint.

- Drive Away Release (DAR)
- Front 11.5-in. ventilated disc brake
- California Air Resources Board (CARB) Emission Standard Low Emission Vehicle III (LEV III), Ultra Low Emission Vehicle (ULEV) 50
- IG-OFF Auto Apply Function (IOA)
- Clean Air Filter
- Intelligent Manual Transmission (iMT)
- MacPherson strut front suspension
- Intelligent Manual Transmission (iMT) with rev-matching capability

## Safety And Convenience

- ToyotaCare (https://www.toyota.com/toyota-care) featuring a no cost maintenance plan with roadside assistance
- 3-point seatbelts for all seating positions; driver-side Emergency Locking Retractor (ELR) and Automatic/Emergency Locking Retractor (ALR/ELR) on all passenger belts
- Energy-absorbing collapsible steering column
- Child-protector rear door locks and power window lockout control
- LATCH (Lower Anchors and Tethers for Children) includes lower anchors on outboard rear seats
- Hill Start Assist Control (HAC)
- Anti-theft system with engine immobilizer
- Star Safety System™ — includes Enhanced Vehicle Stability Control (VSC), Traction Control (TRAC), 4-wheel Anti-lock Brake System (ABS), Electronic Brake-force Distribution (EBD), Brake Assist (BA) and Smart Stop Technology® (SST)
- Driver and front passenger Whiplash-Injury-Lessening (WIL) seats
- Eight airbags — includes Advanced Airbag System with driver and front passenger dual stage airbags, front side airbags, driver knee airbag, passenger seat cushion airbag, and side curtain airbags
- Safety Connect® — includes Emergency Assistance, Stolen Vehicle Locator, Roadside Assistance and Automatic Collision Notification. 3-year trial subscription. See [toyota.com/safety-connect](https://toyota.com/safety-connect) for details.
- Tire Pressure Monitor System (TPMS)
- Side-impact door beams
- Toyota Safety Sense™ 2.0 (TSS 2.0) — Pre-Collision System with Pedestrian Detection (PCS w/PD), Lane Departure Alert with Steering Assist (LDA w/SA), Automatic High Beams (AHB), Full-Speed Range Dynamic Radar Cruise Control (DRCC), Road Sign Assist (RSA) and Lane Tracing Assist (LTA)
- Front and rear energy-absorbing crumple zones

CITY MPG

32



HIGHWAY MPG

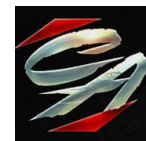
42

Actual mileage will vary with options, driving conditions, driving habits and vehicle's condition

## INSTALLED OPTIONS

[2T] All Weather Floor Liner Package	\$229
• cargo tray	
• All-Weather Floor Liners (2T)	
[FE] 50 State Emissions	\$0
Original Shipping Charge	\$955

Get more information on your smartphone:



www.shopcentralauto.com  
916-333-4773