

Year: 2019  
Make: Honda  
Model: Civic Sedan LX CVT  
VIN: 2HGFC2F66KH573042

Engine: 4 Cylinder Engine  
Transmission: Continuously Variable Transmission  
Exterior: Crystal Black Pearl (BK)  
Interior: Black

## SAFETY

- Back-Up Camera
- Outboard Front Lap And Shoulder Safety Belts -inc: Rear Center 3 Point, Height Adjusters and Pretensioners
- Rear Child Safety Locks
- Airbag Occupancy Sensor
- Curtain 1st And 2nd Row Airbags
- Dual Stage Driver And Passenger Front Airbags
- Low Tire Pressure Warning
- Collision Mitigation-Front
- Collision Mitigation Braking System + FCW
- Dual Stage Driver And Passenger Seat-Mounted Side Airbags
- Side Impact Beams

## INTERIOR

- Air Filtration
- 1 12V DC Power Outlet
- Immobilizer
- Perimeter Alarm
- Sliding Front Center Armrest
- Fixed Rear Head Restraints
- Seats w/Cloth Back Material
- Digital/Analog Appearance
- Outside Temp Gauge
- Redundant Digital Speedometer
- Driver Information Center
- Delayed Accessory Power
- Instrument Panel Bin, Driver / Passenger And Rear Door Bins
- FOB Controls -inc: Cargo Access and Windows
- Cargo Space Lights
- Carpet Floor Trim and Carpet Trunk Lid/Rear Cargo Door Trim
- Fade-To-Off Interior Lighting
- Front Map Lights
- Full Floor Console w/Covered Storage and 1 12V DC Power Outlet
- Driver And Passenger Visor Vanity Mirrors w/Driver And Passenger Auxiliary Mirror
- Day-Night Rearview Mirror
- Metal-Look Gear Shifter Material
- Full Cloth Headliner
- Interior Trim -inc: Metal-Look Instrument Panel Insert, Metal-Look Door Panel Insert and Metal-Look Interior Accents
- Driver Foot Rest
- Illuminated Glove Box
- HVAC -inc: Underseat Ducts
- Automatic Air Conditioning
- Adaptive

- Cruise Control w/Steering Wheel Controls
- Remote Releases -Inc: Power Cargo Access
- Power Fuel Flap Locking Type
- Rear Cupholder
- Front Cupholder
- Manual Tilt/Telescoping Steering Column
- Full Folding Bench Front Facing Fold Forward Seatback Rear Seat
- 4-Way Passenger Seat -inc: Manual Fore/Aft Movement
- 6-Way Driver Seat -inc: Manual Fore/Aft Movement
- Front Bucket Seats -inc: driver seat manual height adjustment and adjustable head restraints

## ENTERTAINMENT

- 2 LCD Monitors In The Front
- Window Grid Antenna
- Radio w/Seek-Scan and Clock
- Radio: 160-Watt AM/FM Audio System -inc: 4 speakers, 5-inch color LCD screen, Bluetooth HandsFreeLink, Bluetooth streaming audio, radio data system , speed-sensitive volume control , 1.0-amp USB audio interface port in front and illuminated steering wheel-mounted controls

## EXTERIOR

- Headlights-Automatic Highbeams
- Auto On/Off Projector Beam Halogen Daytime Running Auto High-Beam Headlamps w/Delay-Off
- Trunk Rear Cargo Access
- Black Grille
- Fully Galvanized Steel Panels
- Fixed Interval Wipers
- Light Tinted Glass
- Fixed Rear Window w/Defroster
- Body-Colored Power Side Mirrors w/Manual Folding
- Body-Colored Door Handles
- Chrome Side Windows Trim
- Body-Colored Rear Bumper w/Chrome Bumper Insert
- Body-Colored Front Bumper w/Chrome Bumper Insert
- Clearcoat Paint
- Compact Spare Tire Mounted Inside Under Cargo
- Steel Spare Wheel

## MECHANICAL

- 4-Wheel Disc Brakes w/4-Wheel ABS, Front Vented Discs, Brake Assist, Hill Hold Control and Electric Parking Brake
- Multi-Link Rear Suspension w/Coil Springs
- Strut Front Suspension w/Coil Springs
- Single Stainless Steel Exhaust
- 12.4 Gal. Fuel Tank
- Electric Power-Assist Speed-Sensing Steering
- Front And Rear Anti-Roll Bars
- Gas-Pressurized Shock Absorbers
- 3.24 Axle Ratio
- Front-Wheel Drive

## CITY MPG

30



## HIGHWAY MPG

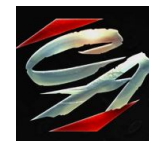
38

Actual mileage will vary with options, driving conditions, driving habits and vehicle's condition

## INSTALLED OPTIONS

[BKP] Crystal Black Pearl	\$0
Original Shipping Charge	\$955

Get more information on your smartphone:



www.shopcentralauto.com  
916-333-4773