

Year: 2020  
 Make: Mercedes-Benz  
 Model: AMG GT R  
 VIN: WDDYJ7KA5LA029044

Engine: 8 Cylinder Engine  
 Transmission: dual clutch man seq w/ auto mode and paddle shifters  
 Exterior: designo Magno Selenite Grey (297)  
 Interior: Fabric/synth.leather/microfibre - blk/anthracite

### SAFETY

- Front Camera
- Back-Up Camera
- Outboard Front Lap And Shoulder Safety Belts -inc: Pretensioners
- Driver And Passenger Knee Airbag
- Airbag Occupancy Sensor
- Curtain 1st Row Airbags
- Dual Stage Driver And Passenger Front Airbags
- Tire Specific Low Tire Pressure Warning
- Driver Monitoring-Alert
- Collision Mitigation-Front
- PRE-SAFE
- PARKTRONIC Automated Parking Sensors
- Dual Stage Driver And Passenger Seat-Mounted Side Airbags
- Side Impact Beams

### INTERIOR

- Air Filtration
- 2 12V DC Power Outlets
- Immobilizer
- Perimeter Alarm
- Front Center Armrest
- Fixed Front Head Restraints
- Digital/Analog Appearance
- Outside Temp Gauge
- Redundant Digital Speedometer
- Driver Information Center
- Delayed Accessory Power
- Power 1st Row Windows w/Driver And Passenger 1-Touch Up/Down
- Driver And Passenger Door Bins
- 3-Year Map Update
- Apple iPhone AMG Track Pace App -inc: Delayed Availability on App Store
- Memory Settings -inc: Steering Wheel
- Smart Device Integration
- Tracker System
- Cargo Space Lights
- Cargo Features -inc: TIREFIT Tire Mobility Kit
- Roll-Up Cargo Cover
- Cargo Net
- Trunk/Hatch Auto-Latch
- Carpet Floor Trim
- Full Carpet Floor Covering -inc: Carpet Front Floor Mats
- Fade-To-Off Interior Lighting
- Front Map Lights
- Full Floor Console w/Covered Storage, Mini Overhead Console and 2 12V DC Power Outlets
- Driver And Passenger Visor Vanity Mirrors w/Driver And Passenger Illumination, Driver And Passenger Auxiliary Mirror
- Day-Night Auto-Dimming Rearview Mirror
- DINAMICA Simulated Suede Door Trim Insert
- Leather/Aluminum Gear Shifter Material
- Full Cloth Headliner
- Driver Foot Rest
- Illuminated Locking Glove Box
- HVAC -inc: Residual Heat Recirculation

- Voice Activated Dual Zone Front Automatic Air Conditioning
- Cruise Control
- Remote Releases -Inc: Power Cargo Access
- Power Fuel Flap Locking Type
- Valet Function
- Front Cupholder
- AMG Sport DINAMICA Simulated Suede Steering Wheel w/Auto Tilt-Away
- Fixed Rear Windows
- Power Tilt/Telescoping Steering Column
- 10-Way Passenger Seat
- 10-Way Driver Seat
- Heated Front Seats
- Power Heated AMG Performance Seats w/Memory

### ENTERTAINMENT

- Siriusxm Traffic Real-Time Traffic Display
- 2 LCD Monitors In The Front
- Bluetooth Wireless Phone Connectivity
- Concealed Diversity Antenna
- Streaming Audio
- Audio Theft Deterrent
- Automatic Equalizer
- Radio w/Seek-Scan, Clock, Speed Compensated Volume Control, Steering Wheel Controls, Voice Activation, Radio Data System, Weatherband, External Memory Control and 6 Gb Internal Memory
- Radio: COMAND Navigation -inc: 4 speakers w/100 watts

### EXTERIOR

- Headlights-Automatic Highbeams
- LED Brakelights
- Perimeter/Approach Lights
- Cornering Lights
- Rear Fog Lamps
- Auto On/Off Reflector Led Low/High Beam Auto-Leveling Directionally Adaptive Auto High-Beam Daytime Running Lights Preference Setting Headlamps w/Delay-Off
- Liftgate Rear Cargo Access
- Galvanized Steel/Aluminum/Composite Panels
- Chrome Grille
- Rain Detecting Variable Intermittent Wipers
- Light Tinted Glass
- Fixed Rear Window w/Defroster
- Body-Colored Door Handles
- Black Side Windows Trim
- Clearcoat Paint
- Tire Mobility Kit
- Tires: 275/35ZR19 Fr 325/30ZR20 Rr

### MECHANICAL

- Electro-Mechanical Limited Slip Differential
- Double Wishbone Rear Suspension w/Coil Springs
- Double Wishbone Front Suspension w/Coil Springs
- Dual Titanium Exhaust w/Polished Tailpipe Finisher
- 19.8 Gal. Fuel Tank
- Hydraulic Power-Assist Speed-Sensing Steering
- Automatic w/Driver Control Ride Control Sport Tuned Adaptive Suspension
- Front And Rear Anti-Roll Bars
- Gas-Pressurized Shock Absorbers
- 3.88 Axle Ratio
- Rear-Wheel Drive

### CITY MPG

15



### HIGHWAY MPG

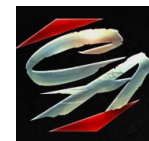
20

Actual mileage will vary with options, driving conditions, driving habits and vehicle's condition

### INSTALLED OPTIONS

[DV2] GT R Pro	\$22,950
[RXE] Wheels: 19" FR/20" RR Amg Perf Grey Twin 5 Spoke	\$1,700
[H77] Amg Matte Carbon Fiber Trim	\$3,150
[DB1] Exclusive Interior Package	\$3,600
[DA1] Convenience Package	\$1,300
[B07] Amg High Perf Ceramic Composite Braking System	\$8,950
[U15] GT R Pro Stripes	\$0
[C52] Fitted Indoor Car Cover	\$370
[811] Burmester High End 3 D Surround Sound System	\$4,500
[239] Active Distance Assist Distronic	\$2,250
[735] Exclusive Trim Package	\$0
Original Shipping Charge	\$995

Get more information on your smartphone:



www.shopcentralauto.com  
 916-333-4773