

Year: 2022  
 Make: Toyota  
 Model: Camry LE SEDAN  
 VIN: 4T1C11AK7NU001240

Engine: 2.5L 4-Cyl. Dynamic Force Engine  
 Transmission: Direct Shift 8-Speed Electronically Controlled Transmission with intell...  
 Exterior: White (040)  
 Interior: Black Fabric

**Exterior**

- LED Daytime Running Lights with on/off feature
- Washer-linked intermittent windshield wipers
- Acoustic noise-reducing front windshield
- In-glass AM/FM antenna
- High Solar Energy-Absorbing glass
- Roof-mounted shark-fin antenna
- LED combination taillights with black trim
- Color-keyed outside door handles
- Bi-LED combination headlights with auto on/off feature
- Dark gray front grille
- Single exhaust
- Color-keyed power outside mirrors
- 17-in. alloy wheels

**Interior**

- Audio — 7-in. touchscreen, six speakers, Android Auto™ & Apple CarPlay® & Amazon Alexa compatible, SiriusXM® with 3-month Platinum Plan trial subscription. See [toyota.com/audio-multimedia](http://toyota.com/audio-multimedia) for details.
- Connected Services — Safety Connect® with 1-year trial, , Wi-Fi Connect with up to 2 GB within 3-month trial.
- One USB charge and media port
- 60/40 split fold-down rear seat with center armrest with cup holders
- One 12V auxiliary power outlet
- Covered center console, armrest and storage
- Soft-material upper door trim
- Interior silver door handles
- Two front and two rear cup holders; two front door and two rear bottle holders
- One USB-C charge port
- Power door locks with shift-linked automatic locking feature with anti-lockout feature
- Rear window defogger and timer
- Passenger-side illuminated glove compartment
- Power windows with auto up/down, jam protection in all positions and retained-power features
- Dual sun visors with sliding extensions and illuminated vanity mirrors
- 3-mode switch
- Day/night rearview mirror
- Overhead console with maplights and sunglasses storage
- Linear dark interior trim

- Dual zone automatic climate control with air filter
- Multi-function in-key remote keyless entry system with lock, two-stage unlock, panic, trunk-release functions and remote illuminated entry
- Dynamic Radar Cruise Control
- Foot pedal parking brake
- Tilt/telescopic 3-spoke steering wheel with audio, Multi-Information Display , Bluetooth® hands-free phone, voice-command, Dynamic Radar Cruise Control , and Lane Departure Alert controls
- Fabric-trimmed front seats with passenger side seatback pocket; 8-way power-adjustable driver's seat with power lumbar support; 6-way adjustable front passenger seat
- 4.2-in. TFT Multi-Information Display with odometer, outside temperature, fuel economy and trip information, current/average fuel economy, distance to empty, average speed, trip distance with timer, and warning messages

**Mechanical And Performance**

- Steering: Electric Power Steering ; power-assisted rack-and-pinion
- Body Construction: Unitized body with front and rear anti-vibration sub-frames
- Transmission: Direct Shift-8AT 8-speed Electronically Controlled automatic Transmission with intelligence with sequential shift mode
- Drivetrain: Front-Wheel Drive
- Brakes: Power-assisted ventilated 12-in. front disc brakes with single-piston calipers; solid 11.06-in. rear disc brakes
- Emission rating: Super Ultra-Low Emission Vehicle
- Suspension: Independent MacPherson strut front suspension with stabilizer bar; multi-link rear suspension with stabilizer bar and front strut tower bracing
- Engine: 2.5-Liter Dynamic Force 4-Cylinder DOHC D-4S Injection Dual Variable Valve Timing with intelligence and Eco, Normal and Sport drive modes; 203 hp @ 6600 rpm; 184 lb.-ft. @ 5000 rpm

**Safety And Convenience**

- Rear-Seat Reminder
- Energy-absorbing collapsible steering column
- Ten airbags — includes driver and front passenger Advanced Airbag System, driver and front passenger seat-mounted side airbags, driver and front passenger knee airbags, rear seat-mounted side airbags, and front and rear side curtain airbags
- 3-point seatbelts for all seating positions; driver-side Emergency Locking Retractor and Automatic/Emergency Locking Retractor on all passenger seatbelts
- Driver and front passenger Whiplash-Injury-Lessening seats
- Star Safety System™ — includes Enhanced Vehicle Stability Control , Traction Control , Anti-lock Brake System , Electronic Brake-force Distribution , Brake Assist and Smart Stop Technology®
- Safety Connect® — includes Emergency Assistance, Stolen Vehicle Locator, Roadside Assistance and Automatic Collision Notification. Available by subscription after 1-year trial has ended.
- LATCH includes lower anchors on outboard rear seats
- Front and rear energy-absorbing crumple zones
- Anti-theft system with alarm
- Child-protector rear door locks and power window lockout control
- Automatic engine shut off
- Hill Start Assist Control
- Side-impact door beams
- Integrated backup camera with projected path
- Toyota Safety Sense™ 2.5+ — Pre-Collision System with Pedestrian Detection , Lane Departure Alert with Steering Assist , Automatic High Beams , Lane Tracing Assist , Road Sign Assist and Dynamic Radar Cruise Control
- Tire Pressure Monitor System

CITY MPG

28



HIGHWAY MPG

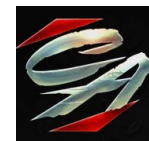
39

Actual mileage will vary with options, driving conditions, driving habits and vehicle's condition

**INSTALLED OPTIONS**

[H6] Rent A Car Program	\$0
[H8] Fleet Credit	\$0
[FE] 50 State Emissions	\$0
[XX] Drop Ship Indicator	\$0
Original Shipping Charge	\$1,095

**Get more information on your smartphone:**



[www.shopcentralauto.com](http://www.shopcentralauto.com)  
 916-333-4773