

Year: 2014
 Make: Mercedes-Benz
 Model: GL-Class 4MATIC 4dr GL 450
 VIN: 4JGDF7CE8EA288962

Engine: 8 Cylinder Engine
 Transmission: 7-Speed A/T
 Exterior: Diamond White (799)
 Interior: Parchment MB-Tex

SAFETY

- Outboard Front Lap And Shoulder Safety Belts -inc: Rear Center 3 Point, Height Adjusters and Pretensioners
- First Aid Kit
- Child Seat Sensor and Rear Child Safety Locks
- Driver Knee Airbag
- Airbag Occupancy Sensor
- Curtain 1st, 2nd And 3rd Row Airbags
- Dual Stage Driver And Passenger Front Airbags
- Tire Specific Low Tire Pressure Warning
- Driver Monitoring-Alert
- Collision Warning-Front
- PRESAFE
- Side Impact Beams

INTERIOR

- Air Filtration
- 3 12V DC Power Outlets and 1 120V AC Power Outlet
- Immobilizer
- Perimeter Alarm
- 2 Seatback Storage Pockets
- Front Center Armrest w/Storage and Rear Center Armrest w/Storage
- Power Anti-Whiplash Adjustable Front Head Restraints and Manual Adjustable Rear Head Restraints
- Analog Appearance
- Outside Temp Gauge
- Redundant Digital Speedometer
- Driver Information Center
- Delayed Accessory Power
- Instrument Panel Covered Bin, Driver / Passenger And Rear Door Bins
- Smart Device Integration
- Tracker System
- FOB Controls -inc: Cargo Access, Windows and Sunroof/Convertible Roof
- Cargo Space Lights
- Roll-Up Cargo Cover
- Cargo Area Concealed Storage
- Trunk/Hatch Auto-Latch
- Carpet Floor Trim and Carpet Trunk Lid/Rear Cargo Door Trim
- Full Carpet Floor Covering -inc: Carpet Front And Rear Floor Mats
- Fade-To-Off Interior Lighting
- Front And Rear Map Lights
- Full Floor Console w/Covered Storage, Mini Overhead Console w/Storage, 3 12V DC Power Outlets and 1 120V AC Power Outlet
- Driver And Passenger Visor Vanity Mirrors w/Driver And Passenger Illumination, Driver And Passenger Auxiliary Mirror
- Day-Night Rearview Mirror
- Urethane Gear Shifter Material
- Leatherette Door Trim Insert
- Full Cloth Headliner
- Driver Foot Rest
- Illuminated Locking Glove Box
- HVAC -inc: Underseat Ducts, Headliner/Pillar Ducts and Console Ducts
- Cruise Control
- Homelink Garage Door Transmitter
- Remote Releases -Inc: Power Cargo Access
- Power Fuel Flap Locking Type

- Valet Function
- Compass
- 3 12V DC Power Outlets
- Ashtray
- Front Cigar Lighter
- Rear Cupholder
- Front Cupholder
- Fixed 50-50 Split-Bench 3rd Row Seat
- Front, Power Fold Into Floor, 2 Manual and Adjustable Head Restraints
- Passenger Seat
- Driver Seat

ENTERTAINMENT

- Bluetooth Wireless Phone Connectivity
- Window Grid Diversity Antenna
- Streaming Audio
- Audio Theft Deterrent

EXTERIOR

- LED Brakelights
- Perimeter/Approach Lights
- Rear Fog Lamps
- Auto On/Off Projector Beam Halogen Daytime Running Headlamps w/Delay-Off
- Roof Rack Rails Only
- Power Liftgate Rear Cargo Access
- Chrome Grille
- Lip Spoiler
- Fully Galvanized Steel Panels
- Speed Sensitive Rain Detecting Variable Intermittent Wipers
- Deep Tinted Glass
- Fixed Rear Window w/Fixed Interval Wiper and Defroster
- Chrome Door Handles
- Chrome Side Windows Trim and Black Front Windshield Trim
- Body-Colored Bodyside Moldings and Chrome Bodyside Insert
- Body-Colored Rear Step Bumper
- w/Chrome Bumper Insert
- Body-Colored Front Bumper
- Clearcoat Paint
- Compact Spare Tire Mounted Inside Under Cargo
- Steel Spare Wheel
- Wheels w/Silver Accents

MECHANICAL

- 4-Wheel Disc Brakes w/4-Wheel ABS, Front And Rear Vented Discs, Brake Assist, Hill Descent Control, Hill Hold Control and Electric Parking Brake
- Permanent Locking Hubs
- Dual Stainless Steel Exhaust
- 26.4 Gal. Fuel Tank
- Electric Power-Assist Speed-Sensing Steering
- Automatic w/Driver Control Height Adjustable Suspension
- Front And Rear Anti-Roll Bars
- 4-Corner Auto-Leveling Suspension
- 1764# Maximum Payload
- Towing Equipment -inc: Trailer Sway Control
- 180 Amp Alternator
- 95-Amp/Hr Maintenance-Free Battery w/Run Down Protection
- Full-Time 4MATIC All-Wheel
- GVWR: 7165 lbs
- 3.46 Axle Ratio

CITY MPG

14



HIGHWAY MPG

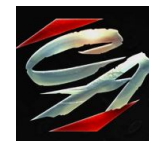
19

Actual mileage will vary with options, driving conditions, driving habits and vehicle's condition

INSTALLED OPTIONS

[799] Diamond White Metallic	\$1,515
[P01] Premium I	\$3,680
[993] Lane Tracking Package	\$875
[846] Illuminated Running Boards	\$670
[866] Rear Seat Entertainment Pre Wiring	\$170
[843] Power Easy Entry	\$400
[734] Eucalyptus Wood Trim	\$0
[235] Parktronic W/Active Parking Assist	\$970
[293] Rear Side Airbags	\$420
Original Shipping Charge	\$925

Get more information on your smartphone:



www.shopcentralauto.com
 916-333-4773