

Year: 2011  
Make: Honda  
Model: Pilot 2WD 4dr EX  
VIN: 5FNYP3H42BB058609

Engine: V6 Cylinder Engine  
Transmission: 5 Speed Automatic  
Exterior: Bali Blue Pearl (BS)  
Interior: Gray

## SAFETY

- Tire pressure monitoring system - inc: location indicators
- Child-proof rear door locks
- Passenger-side 3rd row lower child seat anchors & tethers for children (LATCH)
- 2nd row lower anchors & tethers for children (LATCH)
- 2nd & 3rd row 3-point seat belts
- Front 3-point seat belts -inc: automatic tensioning system, adjustable anchors
- Side curtain airbags on all rows w/rollover sensor
- Dual front side-impact airbags w/passenger-side occupant position detection system
- Dual front dual-stage, multiple-threshold airbags
- Daytime running lights
- Side-impact door beams
- Advanced Compatibility Engineering (ACE) body structure
- Vehicle Stability Assist (VSA) w/traction control
- Brake assist
- 4-wheel anti-lock braking system (ABS) w/electronic brake distribution (EBD)

## INTERIOR

- Rear hidden storage compartment
- Cargo area -inc: cargo light, (4) tie-down anchors, bag hooks
- Upper & lower front row seatback pockets
- Ambient console lighting
- Courtesy door lights
- Map lights on all rows
- Sliding sunvisor extensions
- Dual illuminated visor vanity mirrors
- Sunglasses holder
- (12) cup holders
- (3) 12V aux pwr outlets
- Rear window defroster w/timer
- Rear seat heater ducts
- Tri-zone automatic air conditioning - inc: humidity control, air-filtration system
- Immobilizer theft-deterrent system
- Security system
- Remote fuel filler door release
- HomeLink universal garage door opener
- Pwr windows w/dual front auto-up/down
- Maintenance Minder system
- Outside temp display
- Warning lights -inc: low-fuel, low-oil pressure, door/tailgate open, passenger airbags status, vehicle stability assist
- Instrumentation -inc: digital odometer, (2) digital trip meters, average fuel consumption, miles-to-empty indicator, exterior temperature, compass

- Tilt & telescoping steering column
- Multifunctional center console
- Head restraints at all seating positions
- Front seat adjustable active head restraints

## ENTERTAINMENT

- Integrated glass antenna
- XM satellite radio w/90-day subscription
- AM/FM stereo w/6-disc in-dash CD changer -inc: (6) speakers, subwoofer, MP3/WMA playback, aux input jack, radio data system, speed-sensitive volume control

## EXTERIOR

- Body-colored door handles
- Tailgate w/lift-up glass hatch
- Intermittent rear window wiper/washer
- Variable intermittent windshield wipers
- Rear privacy glass
- Heat-rejecting green-tinted glass
- Body-colored pwr mirrors
- Fog lights
- Multi-reflector halogen headlights w/auto-on/off
- Front & rear splash guards
- Body-colored body side molding
- Roof rails
- Compact spare tire
- P245/65R17 all-season tires

## MECHANICAL

- Chrome exhaust finishers
- Pwr ventilated front/solid rear disc brakes
- Heavy duty pwr steering fluid cooler
- Variable pwr rack & pinion steering
- Front & rear stabilizer bars
- Multi-link rear suspension w/trailing arms
- MacPherson strut front suspension
- Unit-body construction
- Front wheel drive
- Heavy-duty automatic transmission fluid cooler
- Hill start assist
- 5-speed automatic transmission w/OD
- Drive-by-wire throttle
- Active Noise Cancellation (ANC)
- Active control engine mount system (ACM)
- Variable Cylinder Management (VCM)
- 3.5L SOHC MPFI 24-valve i-VTEC V6 engine

CITY MPG  
**17**



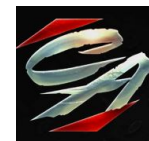
HIGHWAY MPG  
**23**

Actual mileage will vary with options, driving conditions, driving habits and vehicle's condition

## INSTALLED OPTIONS

[BLP] Bali Blue Pearl	\$0
Original Shipping Charge	\$810

**Get more information on your smartphone:**



[www.shopcentralauto.com](http://www.shopcentralauto.com)  
916-333-4773