

Year: 2011  
 Make: Porsche  
 Model: Panamera S  
 VIN: WP0AB2A74BL062962

Engine: 8 Cylinder Engine  
 Transmission: PDK (Automatic)  
 Exterior: Carrara White (B4B4)  
 Interior: Black

### SAFETY

- Dual-tone horn
- Tire pressure monitoring system
- Emergency trunk release
- Child safety rear door locks
- ISOFIX anchors for child seat attachments on rear seats
- 3-point seat belts -inc: pretensioners, force limiters, height adjustment
- Rollover detection system -inc: early deployment of curtain airbags & seat belt pretensioners
- Front/rear curtain airbags
- Integrated front/rear side airbags
- Dual front knee airbags
- Dual front advanced airbags w/passenger sensor
- LED daytime driving lights -inc: 4 LED spots per headlamp
- Integral side-impact protection on all doors
- Electric parking brake
- All around pad-wear sensors
- Porsche stability management -inc: brake assist
- Porsche active suspension management -inc: three manually activated maps
- Anti-lock braking system

### INTERIOR

- Textured leather interior trim
- Illuminated visor vanity mirrors
- Auto-dimming interior & exterior mirrors
- Luggage compartment & footwell area storage nets
- Rear doors storage compartments
- Folding front door compartments
- Storage compartment beneath front center console armrest
- front/ rear cupholders
- Locking A/C cooled glove compartment
- Rear window defogger w/auto-off function
- Anti-theft alarm system -inc: ultrasonic interior monitoring
- HomeLink door opener
- Pwr windows -inc: auto up/down, anti-jamming, door lock open/close facility
- Brushed aluminum door entry guards -inc: model-specific logotype in front
- Continuous center console -inc: folding armrest in the rear, sports button
- Front center console armrest w/integrated storage compartment

### EXTERIOR

- Front window water repellent coating
- Third brake light technology integrated in tailgate
- Rear fog lights
- LED lights -inc: tail lights, brake lights

- Separate front end auxiliary lights -inc: LED position lights, turn signals
- Bi-xenon automatic headlights -inc: dynamic leveling, headlight washer system, welcome home function
- Tinted heat-insulating glass -inc: grey top tint on windshield
- Pwr tilt/slide moonroof
- Front/rear wheelhouse spoilers
- Adaptive 2-way rear spoiler
- Chrome look insert in tailgate
- Chrome look side window surrounds
- Black grained diffuser in lower rear apron
- Black grained air outlets in fenders
- Black front air dam intakes
- Aluminum automatic top-hinged tailgate
- Variable door stop
- Aluminum hood/doors/fenders
- Fully galvanized lightweight bodysell in steel/aluminum hybrid design
- Full underbody paneling

### MECHANICAL

- Dual-twin stainless steel tailpipes
- Multi-link LSA rear suspension w/stabilizer bar
- Double wishbone front suspension
- Steel suspension
- Automatic start-stop engine function -inc: deactivation button on center console
- VarioCam Plus continuously variable valve timing system
- Cylinder-specific knock control
- Electronic throttle
- On-board-diagnosis for monitoring emission control system
- Electronic engine management
- Cylinder-specific exhaust cam contours
- Hydraulic valve lash adjusters
- Returnless fuel system
- Idle-speed control
- 7-speed Porsche Doppelkupplung auto transmission -inc: manual actuation, automatic mode, gear recommendation for optimized fuel economy manual mode
- Direct fuel injection system
- Static high-voltage distribution w/individual ignition coils
- Water-cooling w/thermal management
- Integrated dry-sump lubrication w/dual oil pickup
- Magnesium valve covers
- Aluminum cylinder block & heads
- 4.8L V8 engine

### CITY MPG

16



### HIGHWAY MPG

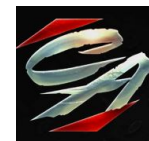
24

Actual mileage will vary with options, driving conditions, driving habits and vehicle's condition

### INSTALLED OPTIONS

[AB] Black, Partial Leather Seat Trim	\$0
[823] Birch Anthracite Interior PKG	\$995
[P64] Premium PKG	\$2,350
[418] 20" 911 Turbo II Wheel	\$3,380
[446] Wheel Caps W/Colored Crest	\$185
[CNG] Exterior Color Painted Rear Apron	\$640
[P61] Bose Audio PKG	\$1,990
[542] Front/Rear Seat Ventilation	\$1,600
[848] Heated 3 Spoke Multi Function Birch Anthracite Steering Wheel	\$615
[625] Porsche Entry & Drive	\$1,090
[576] 4 Zone Automatic Air Conditioning System	\$1,020
[638] Front/Rear Park Assist W/Rearview Camera	\$1,255
[B4] Carrara White	
Original Shipping Charge	\$975

Get more information on your smartphone:



www.shopcentralauto.com  
 916-333-4773