

Year: 2012  
 Make: Mercedes-Benz  
 Model: CLS-Class 4dr Sdn CLS 550 RWD  
 VIN: WDDLJ7DBXCA018007

Engine: 8 Cylinder Engine  
 Transmission: 7-Speed A/T  
 Exterior: Palladium Silver (792)  
 Interior: Ash Leather

## SAFETY

- PRE-SAFE collision preparedness system
- Illuminated emergency interior trunk release
- Tire pressure monitoring system
- Universal LATCH (lower anchors & tethers for children) system
- ISOFIX anchor & tether system
- Rear 3-point seat belts -inc: pretensioners & force limiter
- Front 3-point seat belts -inc: pretensioners & force limiters
- Night security illumination
- Driver/front passenger knee airbags
- Driver/front passenger pelvic airbags
- Front/rear side-impact curtain airbags
- Front side-impact airbags
- Dual-stage front airbags
- Driver-programmable daytime running lamps
- Roll-over sensor
- Electronic stability program (ESP)
- 4-wheel anti-lock braking system (ABS) w/brake assist system (BAS)

## INTERIOR

- 12V pwr outlet in rear seat storage compartment & illuminated cargo area
- Auto-dimming rearview mirror
- Rear window defroster w/auto shut-off based on time, driving speed & exterior temp
- Dual-zone automatic climate control
- Integrated HomeLink compatible (3) button garage door opener

- Pwr windows w/1-touch express up/down
- Rubber-studded stainless-steel pedals
- NECK-PRO active head restraints
- Full-length center console
- 10-way pwr front seats w/3-position memory

## ENTERTAINMENT

- harman/kardon Logic 7 surround sound system -inc: 610-watt, (14) speakers

## EXTERIOR

- Variable intermittent rain-sensing windshield wipers
- Pwr heated mirrors -inc: auto-dimming driver mirror & memory, integrated LED turn signals
- Single red rear foglamp in LH taillamp
- Halogen front foglamps
- Bi-xenon headlamps
- Sport bodystyling
- Pwr tilt/slide sunroof w/1-touch express open/close

## MECHANICAL

- Dual exhaust w/chrome tailpipes
- Dual-circuit hydraulic braking system
- Pwr 4-piston ventilated front & 1-piston ventilated rear disc brakes
- Speed-sensitive pwr rack & pinion steering
- Front/rear stabilizer bars
- AIRMATIC air suspension w/adaptive damping system (ADS II)
- Independent 5-arm multi-link rear suspension -inc: anti-squat control
- Independent 3-link front suspension -inc: anti-dive control
- Rear wheel drive
- 4.6L bi-turbo 32-valve V8 engine

## CITY MPG

17



## HIGHWAY MPG

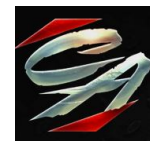
25

Actual mileage will vary with options, driving conditions, driving habits and vehicle's condition

## INSTALLED OPTIONS

[792] Palladium Silver Metallic	\$0
[208] Ash/Black, Leather Seat Upholstery	\$0
[P01] Premium I PKG	\$4,390
<ul style="list-style-type: none"> <li>· iPod/MP3 media interface w/cable</li> <li>· rearview camera</li> <li>· heated/ventilated front seats w/comfort headrests</li> <li>· pwr rear window sunshade</li> <li>· adaptive highbeam assist</li> <li>· full LED headlamps</li> <li>· KEYLESS-GO</li> <li>· pwr trunk closer</li> </ul>	
[993] Lane Tracking PKG	\$850
<ul style="list-style-type: none"> <li>· blind spot assist</li> <li>· lane keeping assist</li> </ul>	
[321] Wheel PKG	\$760
<ul style="list-style-type: none"> <li>· 18" 5-spoke alloy wheels w/all-season tires</li> <li>· AMG sport steering wheel</li> <li>· manual mode for transmission</li> </ul>	
[277] 3 Spoke Sport Steering Wheel	\$0
[736] Black Ash Wood Trim	\$0
[235] Parktronic W/Active Parking Assist	\$970
Original Shipping Charge	\$875

Get more information on your smartphone:



www.shopcentralauto.com  
 916-333-4773