

Year: 2004
Make: Honda
Model: Civic 4dr Sdn Hybrid Manual
VIN: JHMES95664S021381

Engine: 4 Cylinder Engine
Transmission: 5 Speed Manual
Exterior: Magnesium Metallic (SL)
Interior: Gray

SAFETY

- Side-impact door beams
- Child safety seat anchors (LATCH)
- Childproof rear door locks
- Adjustable front seat belt anchors
- Front/rear 3-point seat belts
- Driver & front passenger side-impact airbags w/occupant position detection system (OPDS)
- Driver & front passenger airbags (SRS)

INTERIOR

- Removable cargo area cover
- Chrome interior accents
- Passenger side seatback pocket
- Cargo area light
- Map lights
- Dual visor vanity mirrors
- Door pocket storage bins
- Lockable glove box
- Roof-mounted antenna
- Rear window defroster w/timer
- Rear seat heater ducts
- Remote trunk release w/lock
- Remote fuel filler door release
- Cruise control
- Pwr windows w/auto-down driver window & illuminated driver switch
- Headlights-on reminder
- Indicator lights-inc: low-fuel, low-oil pressure, door/hatch-open
- Maintenance interval indicator
- Economy shift indicator
- Fuel mileage computer
- Dual mode trip odometer
- Tachometer

- Blue-lit instrument panel w/electronic IMA display
- Immobilizer theft deterrent system
- Illuminated ignition switch
- Adjustable steering column
- Driver footrest
- Front beverage holders
- Coin box
- Auxiliary pwr socket
- Driver armrest & storage compartment
- Premium upholstery
- Driver seat height adjustment
- Front bucket seats w/reclining seatbacks, adjustable head restraints

EXTERIOR

- Body-color door handles
- Unique "Hybrid" badging
- Variable intermittent windshield wipers
- Green-tinted glass
- Body-color pwr mirrors
- Body-color body-side moldings
- Body-color bumpers

MECHANICAL

- Regenerative braking *Recharges battery pack during deceleration*
- Pwr front vented disc/rear drum brakes
- Electric variable-assist pwr rack & pinion steering (EPS)
- P185/70SR14 low-rolling resistance all-season tires
- Reactive-link double wishbone rear suspension w/stabilizer bar
- Control-link MacPherson strut front suspension w/stabilizer bar
- Intelligent dual & sequential ignition (i-DSI)
- Front wheel drive
- 5-speed manual transmission w/OD
- Nickel-metal hydride 144-volt battery pack
- 1.3L SOHC MPFI 8-valve VTEC I4 "Lean Burn" engine

CITY MPG

46



HIGHWAY MPG

51

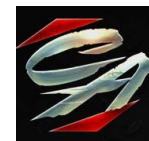
Actual mileage will vary with options, driving conditions, driving habits and vehicle's condition

INSTALLED OPTIONS

Original Shipping Charge

\$515

Get more information on your smartphone:



www.shopcentralauto.com
916-333-4773