

Year: 2018  
 Make: Toyota  
 Model: Corolla XSE  
 VIN: 5YFBURHE3JP827242

Engine: 1.8L 4-Cyl. Engine  
 Transmission: CVT  
 Exterior: Classic Silver Metallic (1F7)  
 Interior: Black Softex

**Exterior**

- In-glass AM/FM antenna
- Color-keyed outside door handles
- Variable intermittent windshield wipers
- Rear combination taillights with LED backup lights
- Bumper-integrated LED Daytime Running Lights
- Chrome-tipped exhaust
- Color-keyed heated power outside mirrors with turn signal indicators
- Rear spoiler
- Power tilt/slide moonroof with sliding sunshade
- Sporty front fascia with gloss-black, mesh-pattern grille
- Multi-LED headlights with LED accent lights
- 17-in. machined alloy wheels with black-painted accents and P215/45R17 tires
- Roof-mounted antenna

**Interior**

- USB 2.0 port
- Automatic climate control with dust and pollen filter and push-button controls
- Digital clock
- Two front and two rear cup holders
- One 12V auxiliary power outlet
- Passenger-side glove compartment
- Center console with storage compartment
- Overhead console with maplights
- Day/night rearview mirror
- Front- and rear-door storage pockets with sculpted bottle holders
- 60/40 split fold-down rear seat with center armrest and two cup holders
- Power door locks with automatic locking feature
- Power windows with driver-side one-touch up/down
- Integrated backup camera with projected path
- Metallic interior trim with chrome interior door handles and color-keyed door panel piping
- Rear window defogger with timer
- Smart Key System on front doors and trunk with Push Button Start, remote keyless entry system with lock, two-stage unlock, panic and trunk-release functions

- Normal and Sport driving modes
- Sport instrumentation cluster with chrome-plated speedometer and tachometer, coolant temperature, 4.2-in. color TFT Multi-Information Display with customizable settings, odometer, tripmeters, outside temperature, current/average fuel economy, cruising range, average speed, elapsed time, shift position; TPMS, ECO indicator, one-touch 3-blink lane change turn signal indicator, and warning messages
- Driver and front passenger heated seats
- SofTex®-trimmed front seats with 8-way power-adjustable driver's seat; and 4-way adjustable front passenger seat with seatback pocket
- Leather-trimmed tilt/telescopic 3-spoke steering wheel with paddle shifters and audio, Multi-Information Display, Bluetooth® hands-free phone, voice-command, Dynamic Radar Cruise Control , Lane Departure Alert with Steering Assist controls

**Mechanical And Performance**

- 1.8-Liter 4-Cylinder DOHC 16-Valve with Dual Variable Valve Timing with intelligence ; 132 hp @ 6000 rpm, 128 lb.-ft. @ 4400 rpm
- Independent MacPherson strut front suspension with stabilizer bar; torsion beam rear suspension with rear stabilizer bar
- Continuously Variable Transmission with intelligence and Shift Mode
- Electric Power Steering ; power-assisted rack-and-pinion
- Unitized body
- Ultra Low Emission Vehicle II
- Front-Wheel Drive
- Power-assisted ventilated 10.8-in. front disc brakes; solid 10.2-in. rear disc brakes and Star Safety System™
- Normal and Sport driving modes

**Safety And Convenience**

- LATCH includes lower anchors on outboard rear seats and tether anchors on all rear seats
- Child-protector rear door locks
- Star Safety System™ — includes Enhanced Vehicle Stability Control , Traction Control , Anti-lock Brake System , Electronic Brake-force Distribution , Brake Assist and Smart Stop Technology®
- Tire Pressure Monitor System
- Energy-absorbing collapsible steering column
- Front and rear energy-absorbing crumple zones with side-impact door beams
- Eight airbags — includes driver and front passenger Advanced Airbag System, driver and front passenger seat-mounted side airbags, driver knee airbag, passenger seat-cushion airbag, and front and rear side curtain airbags
- Adjustable front shoulder anchors, driver and front passenger seatbelt pretensioners with force limiters
- Toyota Safety Sense™ P — Pre-Collision System with Pedestrian Detection , Lane Departure Alert with Steering Assist , Automatic High Beams , Dynamic Radar Cruise Control
- Hill Start Assist Control
- Head-impact protection structure
- Engine immobilizer
- ToyotaCare featuring a no cost maintenance plan with roadside assistance
- 3-point seatbelts for all seating positions; driver-side Emergency Locking Retractor and Automatic/Emergency Locking Retractor on all passenger belts
- Driver and front passenger Whiplash-Injury-Lessening seats
- High-tensile-strength steel body panels

**CITY MPG**  
**28**



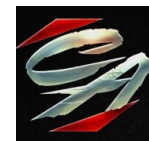
**HIGHWAY MPG**  
**35**

Actual mileage will vary with options, driving conditions, driving habits and vehicle's condition

**INSTALLED OPTIONS**

[SZ] Xse Package	\$0
[ED] Radio: Entune Audio Plus W/Connected Navigation	\$0
<ul style="list-style-type: none"> <li>• Entune Multimedia Bundle (7" high resolution touch-screen display</li> <li>• AM/FM CD player</li> <li>• 6 speakers</li> <li>• auxiliary audio jack</li> <li>• USB 2.0 port w/iPod connectivity and control</li> <li>• advanced voice recognition</li> <li>• hands-free phone capability</li> <li>• phone book access and music streaming via Bluetooth wireless technology)</li> <li>• Connected Navigation Scout GPS Link App</li> <li>• Siri Eyes Free</li> <li>• SiriusXM All Access Radio w/3-month complimentary trial and Gracenote album cover art</li> <li>• HD Radio</li> <li>• HD Radio traffic and weather in major metro areas</li> </ul>	
[XX] Drop Ship Indicator	\$0
[H5] Licensee Risk Program	\$0
[H8] Fleet Credit	\$0
[CF] Carpet Mat Package	\$224
[FE] 50 State Emissions	\$0
Original Shipping Charge	\$930

**Get more information on your smartphone:**



**www.shopcentralauto.com**  
**916-333-4773**