

Year: 2007  
Make: Honda  
Model: S2000 2dr Conv  
VIN: JHMAP21457S001882

Engine: 4 Cylinder Engine  
Transmission: 6 Speed Manual  
Exterior: Silverstone Metallic (SI)  
Interior: Black

## SAFETY

- Side-impact door beams
- 3-point seat belts w/automatic tensioning system
- Driver & passenger airbags (SRS)

## INTERIOR

- Aero wind screen
- Aluminum/leather trimmed shift knob
- Map lights
- 12V pwr outlet
- Rear window defroster
- Air conditioning w/air-filtration system
- Cruise control
- Pwr windows
- Maintenance Minder
- Outside temp gauge
- Indicator lights-inc: fuel & coolant temp, low oil, low fuel
- Digital instrumentation-inc: clock, tachometer, (2) trip meters
- Immobilizer theft-deterrent system
- Leather-wrapped steering wheel
- Textured aluminum pedals

- Center console w/locking storage, (2) beverage holders
- Leather bucket seats-inc: driver 4-way manual adjustment

## EXTERIOR

- 2-speed intermittent windshield wipers
- Body-color pwr mirrors
- High-intensity discharge (HID) headlights
- Body-color impact-absorbing bumpers
- Rear glass window
- Integrated roll bars
- Pwr soft top

## MECHANICAL

- Dual outlet exhaust w/chrome exhaust tips
- Pwr ventilated front/solid rear disc brakes
- Pwr rack & pinion steering
- Front/rear stabilizer bars
- Independent in-wheel double wishbone front & rear suspension w/coil springs
- Rear wheel drive
- Torque-sensing limited-slip differential
- 6-speed manual transmission w/OD
- Drive-by-wire throttle
- 2.2L DOHC PGM-FI 16-valve VTEC I4 engine

CITY MPG

20



HIGHWAY MPG

26

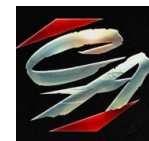
Actual mileage will vary with options, driving conditions, driving habits and vehicle's condition

## INSTALLED OPTIONS

Original Shipping Charge

\$635

**Get more information on your smartphone:**



[www.shopcentralauto.com](http://www.shopcentralauto.com)  
916-333-4773