

Year: 2015
Make: Toyota
Model: Corolla L GRADE
VIN: 5YFBURHE2FP341027

Engine: 1.8L 4-Cyl. Engine
Transmission: 4-Speed Automatic
Exterior: Classic Silver Metallic (1F7)
Interior: Steel Gray Fabric

Exterior

- Color-keyed outside door handles
- LED low-beam headlights with halogen high beams
- In-glass AM/FM antenna
- LED Daytime Running Lights with on/off feature
- 15-in. steel wheels with wheel covers and P195/65R15 91S tires
- Intermittent windshield wipers
- Color-keyed power outside mirrors

Interior

- Day/night rearview mirror
- One 12V auxiliary power outlet
- Passenger-side glove compartment
- Front- and rear-door storage pockets with sculpted bottle holders
- Rear window defogger with timer
- Power door locks with automatic locking feature
- Power windows with driver-side one-touch up/down
- 60/40 split fold-down rear seat
- Center console with storage compartment
- Overhead console with maplights
- Digital clock
- Two front and two rear cup holders
- Instrumentation with speedometer and tachometer, odometer, tripmeters, outside temperature, current/average fuel economy, cruising range, shift position; TPMS, ECO indicator, one-touch 3-blink lane-change turn signal indicator, and warning messages
- Air conditioning with dust and pollen filter
- Fabric-trimmed front seats; 6-way adjustable driver's seat; 4-way adjustable front passenger seat
- Tilt/telescopic steering wheel with audio and Bluetooth® hands-free phone controls

- Tech Audio — includes AM/FM CD player, four speakers, auxiliary audio jack, USB 2.0 port with iPod® connectivity, iPod® interface and hands-free phone capability, phone book access and music streaming via Bluetooth® wireless technology

Mechanical And Performance

- Electric Power Steering ; power-assisted rack-and-pinion
- Unitized body
- 35.6
- Front-Wheel Drive
- Independent MacPherson strut front suspension with stabilizer bar; torsion beam rear suspension with rear stabilizer bar
- 1.8-Liter 4-Cylinder DOHC 16-Valve with Dual Variable Valve Timing with intelligence ; 132 hp @ 6000 rpm, 128 lb.-ft. @ 4400 rpm
- Power-assisted ventilated 10.8-in. front disc brakes; 9-in. rear drum brakes and Star Safety System™
- Ultra Low Emission Vehicle II
- 4-speed Electronically Controlled automatic Transmission with intelligence

Safety And Convenience

- Star Safety System™ — includes Enhanced Vehicle Stability Control , Traction Control , Anti-lock Brake System , Electronic Brake-force Distribution , Brake Assist and Smart Stop Technology®
- ToyotaCare featuring a no cost maintenance plan with roadside assistance
- Energy-absorbing collapsible steering column
- LATCH includes lower anchors on outboard rear seats and tether anchors on all rear seats
- Adjustable front shoulder anchors, driver and front passenger seatbelt pretensioners with force limiters
- Tire Pressure Monitor System
- Child-protector rear door locks
- High-tensile-strength steel body panels
- Front and rear energy-absorbing crumple zones with side-impact door beams
- 3-point seatbelts for all seating positions; driver-side Emergency Locking Retractor and Automatic/Emergency Locking Retractor on all passenger belts
- Eight airbags — includes driver and front passenger Advanced Airbag System, driver and front passenger seat-mounted side airbags, driver knee airbag, passenger seat-cushion airbag, and front and rear side curtain airbags
- Engine immobilizer
- Driver and front passenger Whiplash-Injury-Lessening seats
- Head-impact protection structure

CITY MPG
27



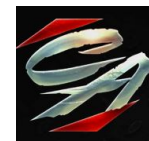
HIGHWAY MPG
36

Actual mileage will vary with options, driving conditions, driving habits and vehicle's condition

INSTALLED OPTIONS

[CF] Carpet Mat Package CF	\$225
[DK] Preferred Owner's Portfolio	\$0
[FE] 50 State Emissions	\$0
[Q2] Body Protection Package 1 Q2	\$485
Original Shipping Charge	\$835

Get more information on your smartphone:



www.shopcentralauto.com
916-333-4773