

Year: 2016  
 Make: Cadillac  
 Model: ATS-V Coupe 2dr Cpe  
 VIN: 1G6AN1RY6G0104025

Engine: V6 Cylinder Engine  
 Transmission: 8-SPEED AUTOMATIC  
 Exterior: Red Obsession Tintcoat (G7E)  
 Interior: Jet Black

### SAFETY

- Tire Pressure Monitoring System
- Trunk emergency release handle
- LATCH system, for child safety seats
- Child seat restraint system, rear facing
- Safety belts, 3-point, rear, all seating positions
- Safety belts, 3-point, all seating positions includes front seat belt pretensioners
- Rear Vision Camera
- Front and Rear Park Assist
- OnStar Basic plan for 5 years including limited RemoteLink mobile app services, Advanced Diagnostics and Dealer Maintenance Notification
- OnStar Guidance plan for 1 year including Automatic Crash Response, Stolen Vehicle Assistance, Roadside Assistance, Turn-by-Turn Navigation, Advanced Diagnostics and more
- Air bag, Passenger Sensing System
- Air bags, dual-stage frontal front and rear side-impact, and driver and front passenger knee
- Daytime running lamps
- StabilityTrak, electronic stability control system

### INTERIOR

- Lighting, ambient, reading lights front and rear and lamp in cargo area
- Visors, driver and passenger illuminated vanity mirrors, covered
- Coat hooks, driver- and passenger-side rear
- Console, overhead
- Mirror, inside rearview auto-dimming, frameless
- Wireless Charging
- Air filtration system
- Defogger, rear-window
- Climate control, dual-zone automatic
- Theft-deterrent system, vehicle, PASS-Key III+
- Trunk release, power
- Cruise control, electronic with set and resume speed and with 1 mph and 5 mph increment adjustment
- Keyless Access, passive entry
- Remote Keyless Entry
- Door locks, power programmable with lockout protection
- Retained accessory power power windows, audio system and sunroof remain operational after ignition is switched off for 10 minutes or until a door is opened
- Windows, power with front express-up and down, rear express-down with rear passenger lockout
- Fuel gauge, analog
- Compass display
- Driver Information Center, 5.7" color display includes driver personalization, warning messages and vehicle information
- Indicator, engine oil life
- Steering column, power tilt and telescoping
- Steering wheel controls, mounted audio controls, cruise and Bluetooth
- Steering wheel, leather-wrapped rim
- Floor mats, carpeted rear
- Floor mats, carpeted front
- Armrest, front center
- Console, floor with floor shifter, integral armrest and dual storage compartment

- Seat, rear, 2-position, split-folding
- Seats, heated driver and front passenger
- Seat adjusters, front passenger, includes manual cushion length adjustment and power side bolster adjustment
- Seat adjusters, driver, includes manual cushion length adjustment and power side bolster adjustment
- Seat adjusters, driver and front passenger 12-way power, plus 2-way power lumbar
- Leather Seats with sueded microfiber inserts and seatbacks
- Seats, front bucket, 18-way performance driver and front passenger includes driver power-adjustable seat back bolster and front passenger power-adjustable seat back bolster and manual cushion length adjustment

### ENTERTAINMENT

- Antenna, integral front and rear
- OnStar with 4G LTE and built-in Wi-Fi hotspot to connect to the internet at 4G LTE speeds, includes 3GB or 3 months OnStar Data Trial Visit [www.onstar.com](http://www.onstar.com) for vehicle availability, details and system limitations. Services and connectivity may vary by model and conditions. 4G LTE service available in select markets. 4G LTE performance based on industry averages and vehicle systems design. Some services require data plan.)
- Active Noise Cancellation
- SiriusXM Satellite Radio SiriusXM Satellite Radio is standard on nearly all 2016 GM models. Enjoy a 3-month All Access trial subscription with over 150 channels including commercial-free music, plus sports, news and entertainment. Plus listening on the app and online is included, so you'll hear the best SiriusXM has to offer, anywhere life takes you. Welcome to the world of SiriusXM
- Audio system feature, Bose premium 9-speaker system
- Cadillac CUE Information and Media Control System AM/FM stereo with 8" diagonal color information display, three USB ports, auxiliary input jack, Natural Voice Recognition and Phone Integration for Apple CarPlay capability for compatible phone

### EXTERIOR

- Door handles, body-color
- Wipers, front intermittent
- Moldings, side glass, gloss Black
- Glass, windshield, solar absorbing
- Glass, Solar-Ray light-tinted
- Mirrors, outside heated power-adjustable and driver-side auto-dimming body-color, manual folding with integrated turn signal indicators
- Lamp, center high-mounted stop/brake
- Headlamps, halogen composite, includes flash-to-pass and twilight sentinel
- Grille, performance
- Moldings, rocker panel, body-color
- Fascias, front and rear body-color
- Tire inflation kit
- Tires, P255/35ZR18 front, P275/35ZR18 rear, performance, summer-only
- Wheels, 18" x 9" front, 18" x 9.5" rear premium painted

### MECHANICAL

- Exhaust, dual stainless-steel, quad
- Brake, electronic parking
- Brake linings, performance
- Calipers, Gray Brembo
- Brakes, 4-wheel antilock, 4-wheel disc
- Steering, power, rack-and-pinion
- Suspension, Special Ride and Handling
- Magnetic Ride Control
- Tow hooks
- Keyless ignition, push button start
- Battery, maintenance free with rundown protection
- Cooling system, extra capacity
- Drivetrain, rear-wheel drive
- Differential, electronic limited slip
- Rear axle, 3.73 ratio

### PACKAGE

- Memory Package recalls 2 driver and exit position "presets" for power driver seat, and outside mirrors

### CITY MPG

17



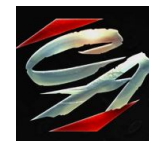
### HIGHWAY MPG

24

Actual mileage will vary with options, driving conditions, driving habits and vehicle's condition

### INSTALLED OPTIONS

|  |          |
|--|----------|
| [FE9] Emissions, Federal Requirements  | \$0      |
| [M5U] Transmission, 8 Speed Automatic  | \$2,000  |
| [HRD] Rear Axle, 2.85 Ratio  | \$0      |
| [15V] Preferred Equipment Group  | \$0      |
| [G7E] Red Obsession Tintcoat   | \$995    |
| [W2E] Seats, Recaro Performance  | \$2,300  |
| [HG3] Jet Black, Leather Seats W/Sueded Microfiber Inserts                       | \$0      |
| [I06] Cadillac Cue Information And Media Control System With Embedded Navigation | included |
| [Y91] Luxury Package   | \$2,100  |
| [CFZ] Carbon Fiber Package   | \$5,000  |
| [PCW] Safety And Security Package  | \$1,500  |
| [Y61] Advanced Security Package  | \$0      |
| [Y65] Driver Awareness Package   | included |
| [Y26] Cadillac Cue And Navigation  | included |
| [J6F] Calipers, Red Brembo   | \$595    |
| [N08] Locking Fuel Door  | included |
| [PB4] Wheel Lugs, Locking  | included |
| [CF5] Sunroof, Power, Sliding  | \$1,050  |
| [T05] Headlamps, Intellibeam   | included |
| [T4F] Headlamps, High Intensity Discharge  | included |
| [CE1] Wipers, Front Intermittent, Rainsense                                      | included |
| [VK3] License Plate Front Mounting Package                                       | \$15     |
| [UQ5] Audio System Feature, Bose Premium Surround Sound 12 Speaker System        | included |
| [U2M] Siriusxm Satellite Radio And HD Radio                                      | \$0      |
| [UQT] Performance Data And Video Recorder  | \$1,300  |
| [KB7] Steering Wheel Mounted Paddle Shift Controls                               | \$0      |
| [UTU] Sensor, Vehicle Inclination  | included |
| [UV6] Head Up Display  | \$425    |
| [JF5] Pedals, Sport Alloy  | included |
| [BTV] Remote Start   | \$0      |
| [UG1] Universal Home Remote  | included |
| [UTR] Theft Deterrent Alarm System, Self Powered, Additional Shielded            | included |
| [ULS] Steering Column, Lock Control  | included |
| [K16] Receptacle, Power, 110 V   | included |
| [UEU] Forward Collision Alert  | included |
| [UHX] Lane Keep Assist   | included |
| [UKC] Side Blind Zone Alert  | included |
| [UFG] Rear Cross Traffic Alert   | included |
| Original Shipping Charge   | \$995    |



[www.shopcentralauto.com](http://www.shopcentralauto.com)  
 916-333-4773